

# QUICKSTART GUIDE

**MIDIPLUS**  
**SMART FACE**  
USB AUDIO INTERFACE



# INTRODUCTION

Thanks for your purchase of the MIDIPLUS SMART FACE USB Audio interface. This interface brings an unparalleled level of USB audio quality to the Mac or PC, with pristine 16-bit /48 KHz A/D and D/A converters, ultra-low jitter clock, and low noise MIC/ line /hi-Z preamp.

## Features of the SMART FACE

- 2 channels 16 bit /48k hi-Z inputs, 2 channels 16 bit / 48kHz outputs
- 1 microphone input (XLR balanced ) with 48V phantom power and gain control
- 1 high-impedance instrument / line input (balanced /unbalanced 1/4"TRS
- 2 channels line inputs (RCA @. 10dBV )
- 2 channels line outputs (RCA @. 10dBV )
- Stereo headphone output with level control knob
- Gain control knob for input channels (+45 dB Max. )
- USB-powered for total mobility
- Supports professional two-channels recording and playback
- Supports common sampling frequencies (see Technical Spec. section )
- Extremely wide dynamic range and low signal-to-noise (see Technical Spec. section) for ultra-quiet, professional-quality recording
- Completely USB-powered (no power supply required )
- Class-compliance on Windows XP Windows Vista & Mac Os x(10.2.6.& higher )systems
- One-year warranty

## System Requirements

The SMART FACE has been designed to work with Win XP or Win Vista Windows PC:

### 1. Minimum Required

- 350 MHz Pentium 11
- 64MB RAM
- Native USB 1.1 Port, on motherboard
- Windows@ 98SE, 2000 (SP2), ME, or XP (SP1 ) Home or Pro (128 MB )

## 2. Recommended

- 700 MHz Pentium III
- 128 MB RAM
- Windows 2000 (SP2 ) or XP (SP1 ) Home or Pro

## What's in the box

- A SMART FACE USB audio interface
- download the latest versions here:  
<http://www.midiplus.com.tw/MIDIPLUS-Download.htm>
- A user's manual
- A USB cable
- 2 stereo audio cables (RCA )

# DESCRIPTION

## Hardware Setup

**1. XLR MIC Input:** This XLR balanced connector accepts an instrument or line level signal for Channel 1 of the SMART FACE.

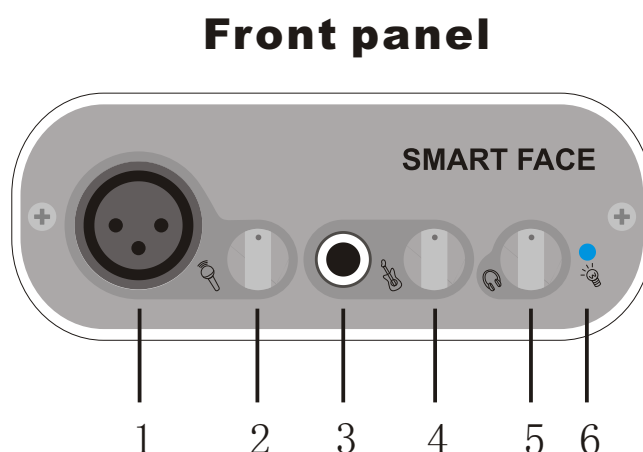
**2. MIC level control:** This level control regulates the level of the signal going from the XLR MIC input. When you plug a guitar or bass in the XLR MIC input .

**3. INST/MIC Input:** This 1/4" connector accepts an instrument , dynamic MIC or line level signal for Channel 2 of the SMART FACE .

**4. INST/MIC level control:** This level control regulates the level of the signal going from the INST/MIC input. When you plug a guitar, bass or a dynamic MIC in the INST/MIC input.

**5. Headphone output level control:** This level control regulates the level of the output signal from the headphone amplifier.

**6. Power Indicator:** This LED indicator lights when the SMART FACE is receiving power through its USB port.



**7. Headphone Output Jack:** This 1/4" stereo jack plays back outputs 1 and 2 through the Left and Right speakers of your headphones.

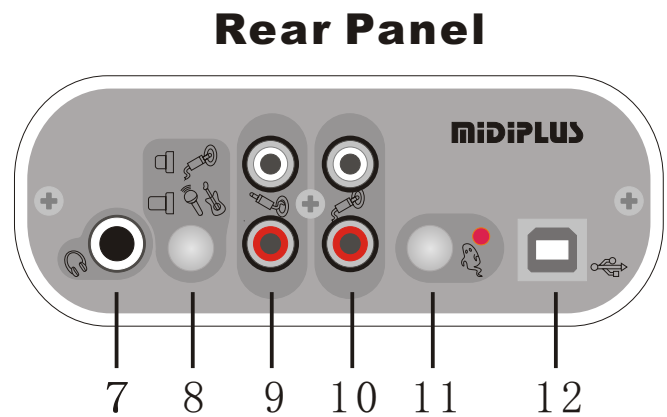
**8. Input select:** Switch to select the input channels as XLR/MIC/INST or line input.

**9. RCA Output 1 and 2:** These unbalanced RCA output the signal which is output from your computer and should be connected to a pair of powered speakers, a mixer or a stereo receiver.

**10. RCA input 1 and 2:** These RCA input accepts the line level stereo signal. If you are recording a stereo line-level source, plug the left channel into line Input 1 and the right channel into line input 2.

**11. Phantom Power On /Off:** Use this switch to turn on /off 48V phantom power.

**12. USB Jack:** This jack connects the SMART FACE to your computer. Using USB 1.1 (or higher) connection.



## USB Connection

The SMART FACE communicates with your computer through a USB port. It is also powered by the USB connection.

Because of this, we recommend that you plug the SMART FACE into one of the built-in USB ports on your computer, **not through a keyboard connection or USB hub.**

To connect your SMART FACE, find the open jack of an unused USB port on your computer and connect it to the SMART FACE USB jack with the included USB cable. This computer USB jack will most often be located on a rear panel and will probably be marked with a symbol looking something like the one pictured here.

In Windows XP & Vista, the SMART FACE is class-compliant; you may simply plug the unit into a USB port.

However, choosing to install the ASIO driver will allow the following added functionality;

Windows XP and Vista-Device Control Panel and ASIO support with low-latency drivers.

# SOFTWARE INSTALLATION

## Windows XP

Follow these instructions to install the SMART FACE driver on a Windows XP computer.

1. First connect the SMART FACE to your computer using the supplied USB cable .
2. Windows will detect the new USB device and install the USB audio device automatically.
3. You need to download the driver from: Log In as Administrator  
<http://www.midiplus.com.tw / MIDIPLUS-Download.htm>.
4. Double click the ASIO2KS.exe file, keep clicking YES to finish the driver installation.
5. After the software installation, you can go to the **windows start manual-program-ASIO2KS-asio2ks configuration** to launch the control panel.
6. Click the driver enable to make the driver start to work, select the USB Audio Device, now you can use low-latency ASIO driver.

## Control Panel Setup

Once setup is complete, you can control most aspects of the SMART FACE using its control panel. To launch the control panel in your operating system, check the following Instructions.

### Windows:

**GO to the START-Program-ASIO2KS-asio2ks configuration to launch the control panel.**

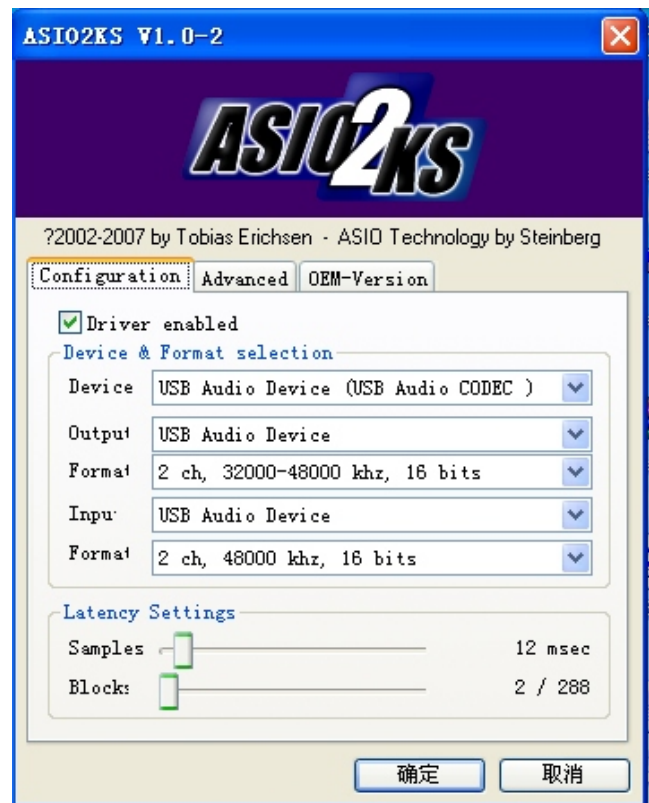
The control panel has the following sets of controls:

### Configuration:

**Device:** Please choose the SMART-FACE (USB Audio device).

**Output:** the 2 channel output of SMART FACE

**Format:** you can set your SMART FACE playback sampling rate from  
1 16 bit/32KHz-48 KHz



**Latency setting:** shorter latency time will occupy more CPU source.4-11 milliseconds for average PC.

If you hear some“POP...”, please drag it higher to 10-20msec.

**Advance:** its no recommend changing any setting on Advance tab.

# TECHNICAL SPECIFICATIONS

## Hardware Features

### Analog Inputs:

- XLR MIC balanced with switchable phantom power (+48V) input
- 1/4”unbalanced high-impedance dynamic MIC & instrument input  
(For electric guitar & bass)
- RCA stereo audio signal inputs
- Input channel gain knobs: +45 dB Max.

### Analog Outputs:

- RCA stereo Unbalanced Outs: 1/4” (-10 dBV nominal, +1.7 dBV max)
- Power USB (no transformer or batteries required)
- Analog audio stereo in-to-USB
- USB-to-analog audio stereo out

**Supported Sampling Frequencies (Hz):**8000, 9600, 11025, 12000, 16000, 22050, 24000, 32000, 44100 & 48000(For Audio Input); 32000, 44100, 48000(For Audio Output)

## Audio Performance

### Outputs, 1/4” & Stereo line:

- Dynamic Range:**> 90 dB (typical,-60dB input, A-weighted )
- S/N Ratio:** >90 dB ( typical, A-weighted )
- THD:** -90dB (typical)

### Inputs, INST/MIC:

- Dynamic Range:** >90 dB (typical,-60 dB input, A-weighted)
- S/N Ratio:** >90dB ( typical, A-weighted )

### Inputs, Line:

- Dynamic Range:** >90 dB (typical,-10 dB input, A-weighted)
- S/N Ratio:** >90 dB ( typical, A-weighted )

www. midiplus. cn  
Www. midiplus. com. tw